

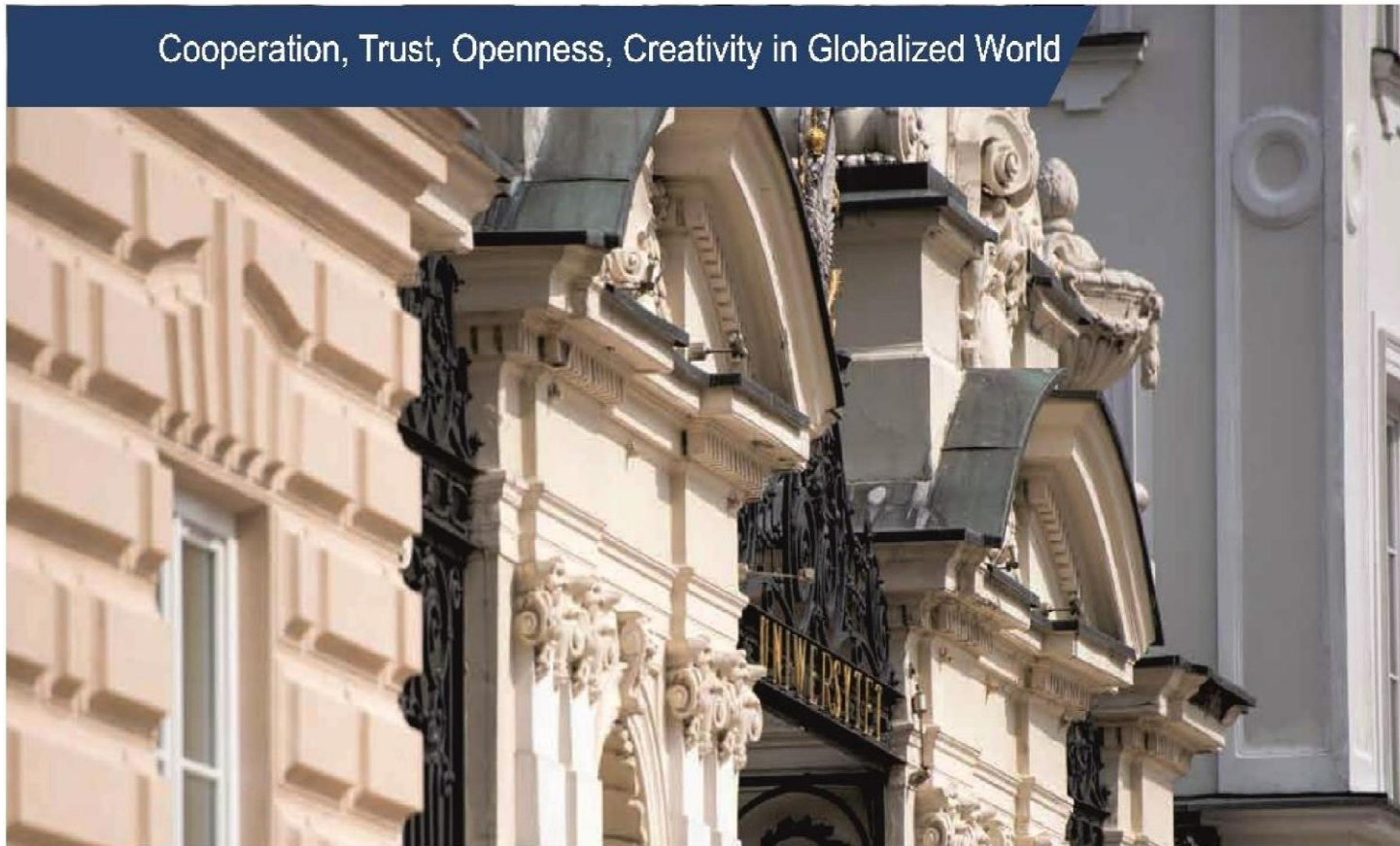
# University of Warsaw, Poland



# ASAIHL Warsaw Conference 2020, June 18-19

## **BRIDGES FOR SCIENCE AND EDUCATION**

Cooperation, Trust, Openness, Creativity in Globalized World



Poland is the 7<sup>th</sup> largest country in Europe with 38 million people. It is a member of the European Union and the Schengen Area.



# HIGHER EDUCATION INSTITUTIONS IN POLAND



- **academic tradition in Poland goes back to the mid-14<sup>th</sup> century**  
The first Polish university was established in Krakow in 1364.
- **132 public Higher Education Institutions (HEIs)**  
classic universities, medical schools, universities of applied sciences, schools of economics, schools of agriculture, teacher training colleges, schools of fine arts, sports colleges, military colleges, ecclesiastical colleges, vocational college
- **1.3 million students**
- **73 000 international students (long-term) from over 150 countries**
- **Poland is a member of the European Higher Education Area  
(operating within the European Credit Transfer System)**

# UW – FACTS AND FIGURES



- **The University of Warsaw was founded in 1816. It is the largest university in Poland and the best research centre in the country.**
- **UW occupies 1<sup>st</sup> place in the national rankings of universities**
- **UW belongs to the top 3% of universities in the world**  
according to global rankings such as THE, QS and ARWU
- **UW is among the „Nature” Rising Stars**  
3<sup>rd</sup> place among the institutions of South East Europe and 96<sup>th</sup> place worldwide in Nature Index 2016 Rising Stars
- **UW was granted the “HR Excellence in Research” award**  
it is given by the European Commission and identifies the institutions that adopted the principles of the European Charter for Researchers



HR EXCELLENCE IN RESEARCH

# UNIVERSITY COMMUNITY

- **7 300 employees**
  - 3 800 academic teachers
- **45 500 students**
- **3 000 doctoral students**
- **4 800 international students  
and doctoral students**
- **3 000 post-diploma students**
- **10 000 graduates per year**



# 21 FACULTIES

+ 30 ACADEMIC AND RESEARCH UNITS

Faculty of Applied Linguistics

Faculty of Applied Social  
Sciences and Resocialisation

Faculty of “Artes Liberales”

Faculty of Biology

Faculty of Chemistry

Faculty of Economic Sciences

Faculty of Education

Faculty of Geography  
and Regional Studies

Faculty of Geology

Faculty of History

Faculty of Journalism,  
Information and Book Studies

Faculty of Law  
and Administration

Faculty of Management

Faculty of Mathematics,  
Informatics and Mechanics

Faculty of Modern Languages

Faculty of Oriental Studies

Faculty of Philosophy  
and Sociology

Faculty of Physics

Faculty of Polish Studies

Faculty of Political Science  
and International Studies

Faculty of Psychology

# 3 CAMPUSES IN WARSAW

University life is concentrated on three campuses:

- **Main Campus**
  - historic seat of the University
  - located in the heart of Warsaw – part of the city’s flagship Royal Route
  - appreciated for its elegant architecture, dating back to 17<sup>th</sup> century
  - home to the humanities and social sciences, the UW authorities and central administration offices
- **Ochota Campus**
  - home to science and natural science
  - recently gained impressive new buildings, housing state-of-the-art laboratories
- **Służewiec Campus**
  - home to the Faculty of Management and a part of the Faculty of Applied Linguistics buildings, student dormitories



# 1<sup>ST</sup>, 2<sup>ND</sup> AND LONG CYCLE – UNIFORM MASTER’S STUDIES



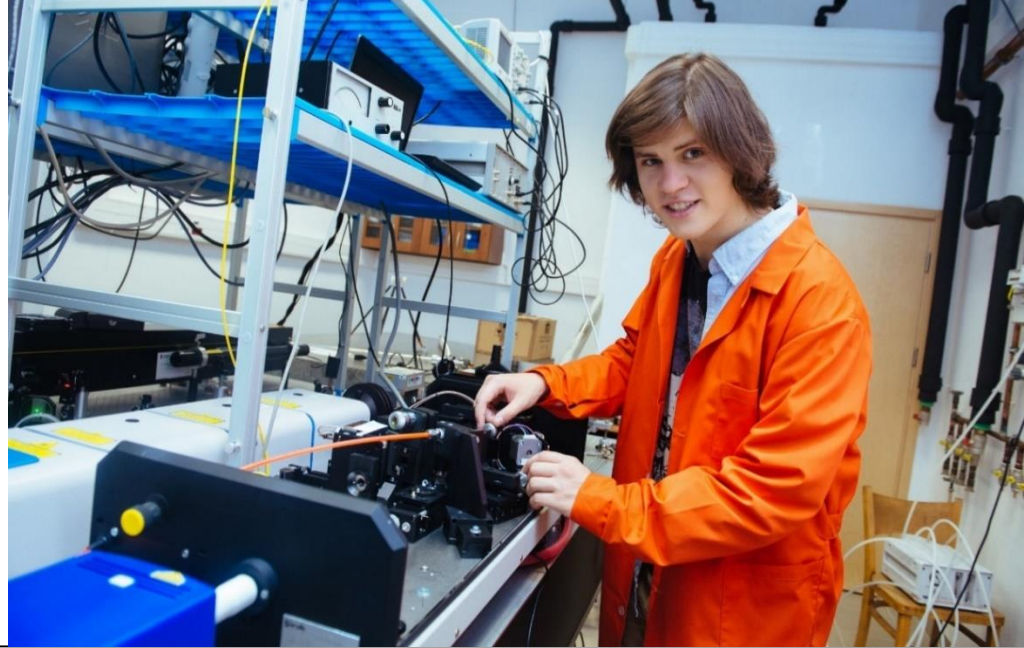
- **over 100 programmes in humanities, social, exact and natural sciences**
- **26 English-language programmes**  
within the Polish-language programmes, 2 000 courses are taught in foreign languages
- **29 double degree programmes run by the UW and international partners**
- **Recognition of Prior Learning (RPL)**  
process for recognising knowledge, skills and competences that have come from experience or previous formal or informal learning; the recognition gained may considerably shorten the normal period of studying

# 26 ENGLISH-LANGUAGE PROGRAMMES

1<sup>st</sup>, 2<sup>nd</sup> and long cycle – uniform Master's studies

- American studies (1<sup>st</sup>, 2<sup>nd</sup> cycle)
- Archaeology (1<sup>st</sup>, 2<sup>nd</sup> cycle)
- Chemistry (2<sup>nd</sup> cycle)
- Economics – International Economics (2<sup>nd</sup> cycle)
- English Studies (1<sup>st</sup>, 2<sup>nd</sup> cycle)
- Environmental Management (2<sup>nd</sup> cycle)
- European Administration (2<sup>nd</sup> cycle)
- European Studies – European Integration (1<sup>st</sup> cycle)
- Finance, Investments and Accounting (1<sup>st</sup> cycle)
- Humanitarian Action (2<sup>nd</sup> cycle)
- Informatics and Econometrics – Data Science (2<sup>nd</sup> cycle)
- International Business Program (2<sup>nd</sup> cycle)
- International Relations (1<sup>st</sup>, 2<sup>nd</sup> cycle)
- Internal Security (1<sup>st</sup>, 2<sup>nd</sup> cycle)
- Journalism and Information Studies (1<sup>st</sup> cycle)
- Philosophy (1<sup>st</sup> cycle)
- Political Science (1<sup>st</sup>, 2<sup>nd</sup> cycle)
- Psychology (uniform Master's cycle)
- Quantitative Finance (2<sup>nd</sup> cycle)
- Teaching English to Young Learners (2<sup>nd</sup> cycle)

# PhD PROGRAMMES, POST-DIPLOMA PROGRAMMES AND COURSES



- **35 programmes of doctoral studies**
- **individual PhD programmes held in English**
- **co-tutelle agreements**
  - a joint doctoral assessment process that leads to the conferment of a doctoral degree at UW and an equal degree at the foreign partner institution
- **145 post-diploma programmes (3 Master of Business Administration programmes)**
- **Open University courses**

# UNIVERSITY OF RESEARCH

- **3 800 academic teachers**  
750 professors
- **3 000 doctoral students**
- **100 million euro research budget**  
 $\frac{1}{3}$  of the University budget
- **3 500 research topics**  
humanities, social, exact and natural sciences  
interdisciplinary studies, including subjects  
in medical or technical sciences
- **1 600 projects**  
financed from the national or international  
research grants
- **7 000 publications per year**



UW research centres are found not only in Poland. The astronomers observe the sky in the Las Campanas Observatory in Chile. The archaeological research centre in Cairo has been in operation since 1959. In 2018, a new archaeological unit in Khartoum has been opened in Sudan.



# INTERNATIONAL RESEARCH PROGRAMMES

- **European Union funds**

**7<sup>th</sup> Framework Programme (2007-2013) – 32.5 million euro, 98 projects**  
**Horizon 2020 (Framework Programme for Research and Innovation 2014-2020) – over 50 projects**

- **Other international subsidies**

**Polish-Swiss Research Programme, European Economic Area and Norway Grants, European Cooperation in the Field of Scientific and Technical Research (COST), European Space Agency, European Molecular Biology, Humanities in the European Research Area (HERA), European Organization for Nuclear Research (CERN), International Visegrad Fund Polish-German Science-Foundation, Chiang Chingkuo Foundation for International Scholarly Exchange**



Over the last decade, thanks to EU funding, representatives of the exact and natural sciences have been equipped with laboratories facilitating research at the highest level. On the Ochota campus, two interdisciplinary centres have been built: the Centre of New Technologies and the Biological and Chemical Research Centre.

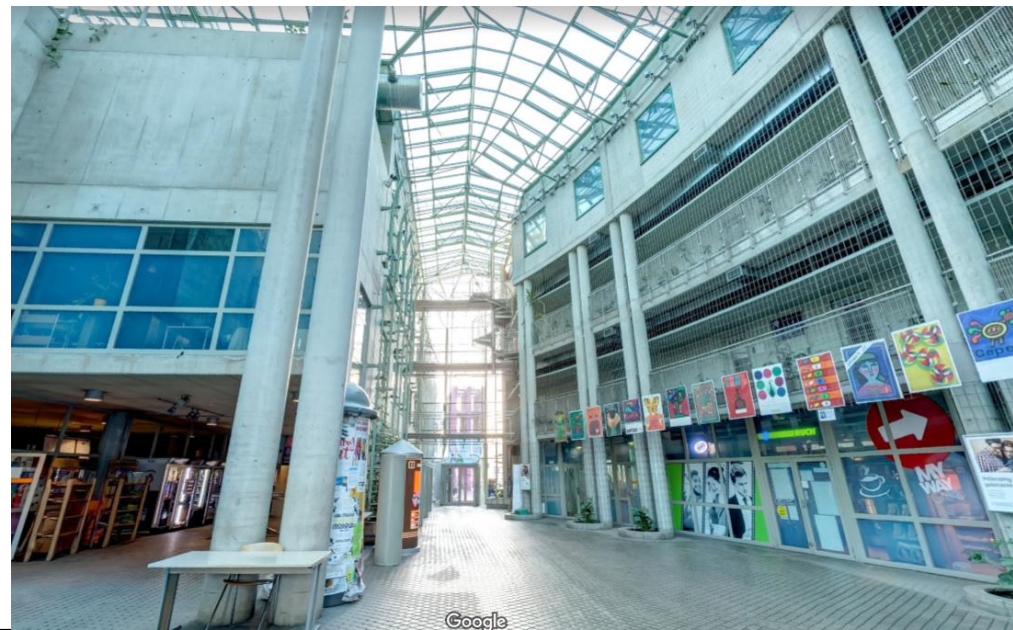
# UNIVERSITY OF WARSAW LIBRARY

**modern building,  
new technologies,  
high-tech library systems**





# INTERNATIONAL COOPERATION



- **800 international partners**
  - 420 universities in 73 countries that work with the UW under bilateral agreements
- **100 international societies and research networks with UW as a member**
- **UW is the most active Polish university in academic exchange programmes**
  - Erasmus+, Central European Exchange Program for University Studies, Deutscher Akademischer Austausch Dienst programmes, Polish-American Fulbright Commission programmes

# INTERNATIONAL COOPERATION

## – EXAMPLES

---

- **associations of universities with UW as a member, e.g. :**
  - European University Association (EUA)
  - Network of the Universities from the Capitals of Europe (UNICA)
  - Heads of University Management & Administration Network in Europe (HUMANE)
- **100 international societies and research networks with UW as a member, e.g. :**
  - Inter-university Consortium for Political and Social Research (ICPSR)
  - International Migration, Integration and Social Cohesion (IMISCOE)
  - Research Network, Central & Eastern European Network of Indian Studies (CEENIS)
  - European Research Consortium for Informatics and Mathematics (ERCIM)
  - Global Biodiversity Information Facility (GBIF)
  - Digital Research Infrastructure for the Arts and Humanities (DARIAH-ERIC)
  - Global Universities Partnership on Environment and Sustainability (GUPES)
- **UW is a member of research consortiums established for specific research projects, UW scholars participate in international research undertakings, e.g.:**
  - Graphene Flagship
  - H.E.S.S., CTA, LIGO/VIRGO, Planck, Gaia, Araucaria (astronomy)
  - EIT Food – Knowledge and Innovation Community (KIC)
  - European Organization for Nuclear Research (CERN)
  - Next Generation Internet (NGI) – the initiative of the European Commission



In 2018, the University of Warsaw, Sorbonne University, Charles University, Heidelberg University, University of Copenhagen and University of Milan signed a declaration regarding the formation of 4EU+, a European University Alliance. The alliance aims to strengthen cooperation in research, education and the mobility of researchers and students.

# 4EU+ Alliance

6 partners 3 challenges 1 vision

HEIDELBERG  
UNIVERSITY

UNIVERSITY  
OF COPENHAGEN

UNIVERSITY OF WARSAW

SORBONNE UNIVERSITY

CHARLES  
UNIVERSITY

UNIVERSITY OF MILAN

# What is 4EU+?

- **European alliance of six comprehensive, research-intensive, public European universities, leading institutions in their countries**
- **Similar yet different: in terms of international visibility, research impact, level of internationalisation, lifelong learning, entrepreneurship initiatives, digitalisation of education, streamlining of administrative procedures**
- **Geographically balanced: Member States where our institutions are situated stretch from the Mediterranean to the North and Baltic Seas, covering 39% of the EU territory**
- **Partnership based on previous bilateral and multilateral collaborations**
- **Founded on a shared vision of a European university and shared responsibility for Europe**

# **ASAIHL Warsaw Conference 2020, June 18-19**

## **BRIDGES FOR SCIENCE AND EDUCATION**

Cooperation, Trust, Openness and Creativity in  
Globalized World



## **Tentative program**

■ **June 17, 2020: ASAIHL Board Meeting**

**June 18, 2020**

- **8:30-10:00 Registration**
- **10:00 Opening Ceremony**
- **10:30-13:00 Main session: Bridges for Science and Education**
- **13:00-14:00 Lunch**

- **14:00-17:00 Parallel sessions:**
- **(1) Cooperation: inter-universities educational programs**
- **(2) Trust: the basis for integration in education**
- **18:00-20:00 Reception**

**June 19, 2020**

- **10:00-12:30 Parallel sessions:**
- **(1) Openness: a cross-cultural workshop – how to understand each other?**
- **(2) Creativity: cross-disciplinary and / or interdisciplinary science?**
- **12:30-14:00 Lunch**
- **14:00-16:00 Closing Ceremony**
- **16:30-19:00 Main Campus tour, individual meetings**

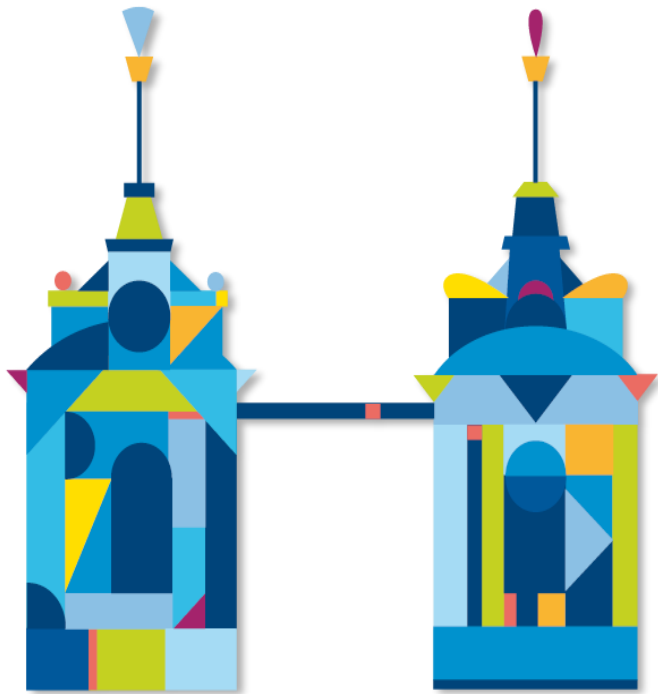
**June 20, 2020**

- **sightseeing tours**

# Important dates:

- **Registration opening: November 1, 2019**
- **Deadline for abstracts: January 31, 2020**
- **Abstracts acceptance: March 1, 2020**
  
- **Selected papers will be published in scholarly journal**
-





**UNIVERSITY OF WARSAW**

---

**Krakowskie Przedmieście 26/28  
Warsaw, Poland**

**<http://en.uw.edu.pl>**